

ACCOMODATING DIFFERENT BRIEFS & ENVIRONMENTS IS ONE OF THE MAIN FOCUSES OF OUR DONGA DESIGN. OUR DONGA MODULES CAN BE ARRANGED IN A NUMBER OF CONFIGURATIONS TO SUIT DIFFERENT SITES. BY ALSO MODIFYING THE COMPOSITION OF ROOF & WALLS, PROVIDING DOUBLE GLAZED WINDOWS, THUS INCREASING THERMAL PROPERTIES TO SUIT DIFFERENT CLIMATES IS ATTAINABLE.

OUR DONGAS SPECIALISE BEING INSTALLED IN REMOTE LOCATIONS BUT WILL WORK IN ANY GIVEN LOCATION THAT ACCOMODATION & FACILITIES WILL BE NEEDED.

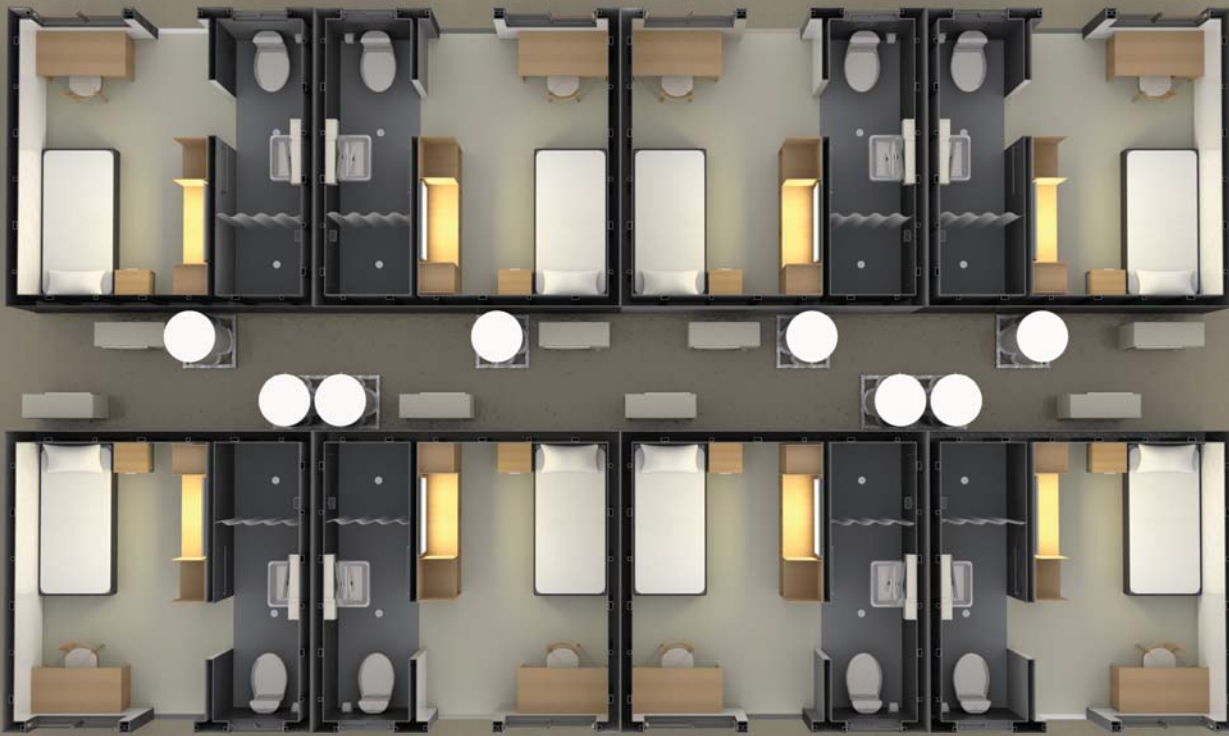


THE DONGA MAY BE SMALL ON SIZE BUT COMFORT & PRACTICALITY IS A KEY COMPONENT OF DESIGN. ALL AMENITIES HAVE BEEN THOUGHT THROUGH TO PROVIDE THE GREATEST AMOUNT OF COMFORT WHILE KEEPING THE SIZE TO A MINIMUM.

TRANSPORT IS ANOTHER HUGE ADVANTAGE DUE TO BEING ABLE TO TRANSPORT 4 DONGAS IN A ROW AT ONE TIME WITH MINIMAL INSTALLATION WORKS.

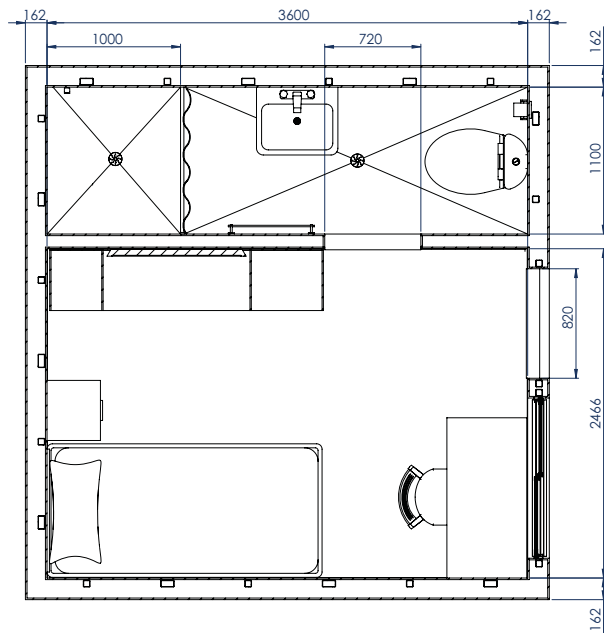
DONGA FACILITIES



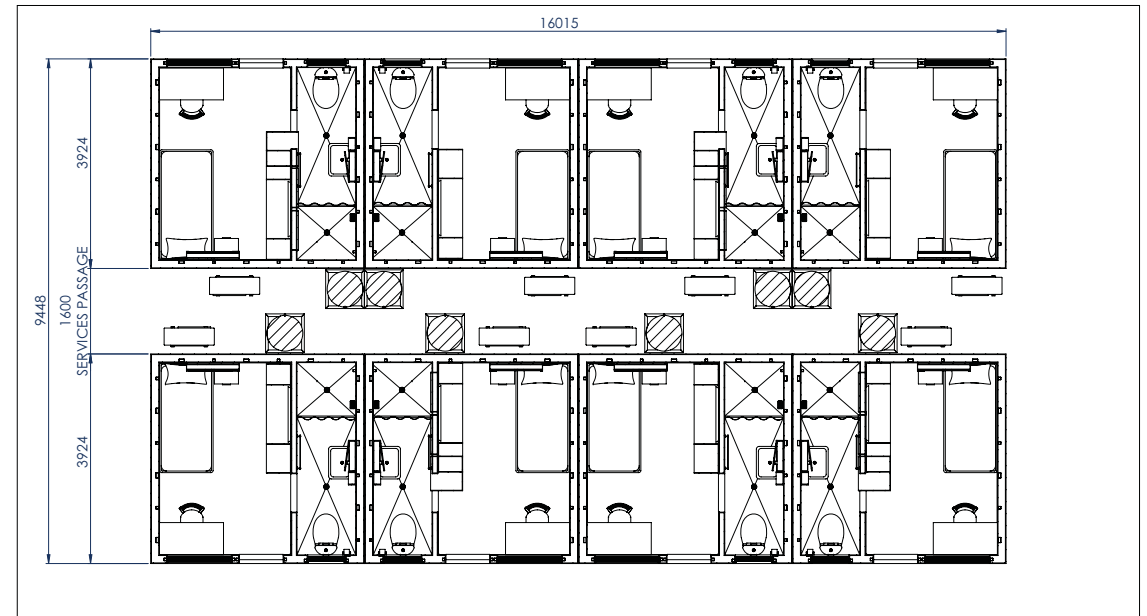


DONGA FACILITIES



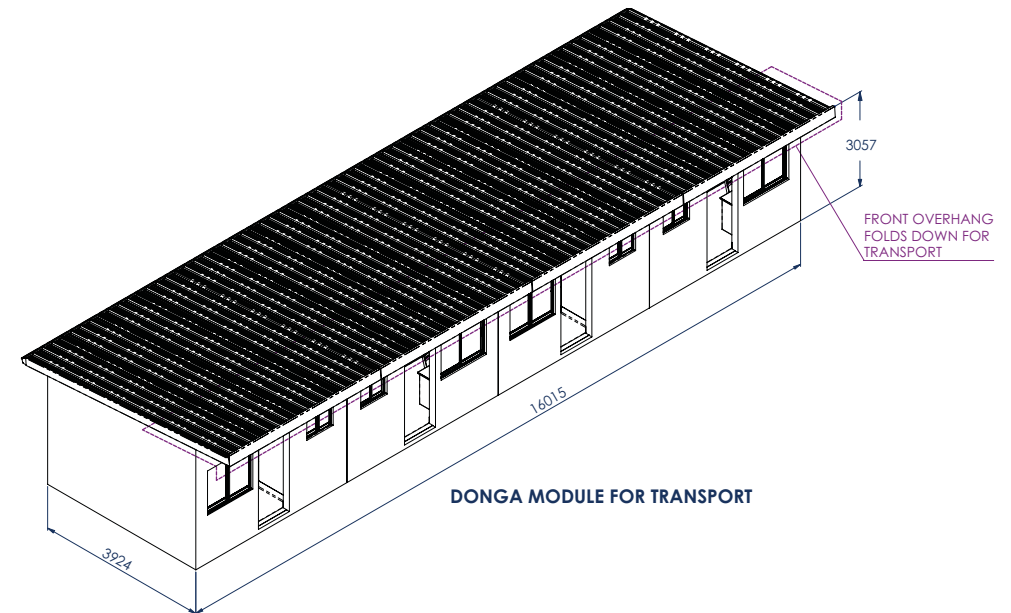


PLAN SECTION OF SINGLE DONGA



PLAN SECTION OF GROUPED DONGAS
(EXAMPLE OF A CONFIGURATION)

- OUTER CLADDING CONSISTS OF 12mm THK GLASS REINFORCED CONCRETE ROOF & WALL PANELS WITH HALF LAP, MAINTENANCE FREE JOINTS
- GRC CLADDING MAY BE PAINTED OR KEPT NATURAL
- FLOORING CAN CONSIST OF EITHER CARPET TILES OR WELDED VINYL FOR EASY CLEANING
- SIMPLE, FAST CONSTRUCTION OF MODULES; DELIVERED AS TWO HALVES
- OFF SITE CONSTRUCTION, REDUCING THE NEED FOR NUMEROUS SKILLED PERSONNEL ON SITE
- STRONG, GALVANISED STEEL BASEFRAME SUPPORTS HARD WEARING 18mm TONGUE & GROOVE FIBRE CEMENT FLOORING, FINISHED WITH FUSS FREE WELDED VINYL TILES
- MINIMAL SITE WORKS - INSTALLATION OF MODULES OCCURS THROUGH HATCHES IN THE FLOOR
- PIER OR STRIP FOOTINGS MADE TO SUIT SITE/SITUATION
- FAST BUILDING INSTALLATION - AFTER DELIVERY OF MODULES TO SITE, CONNECTION OF BUILDING SERVICES, GUTTERS & DOWNPIPES ARE ALL THAT REMAINS TO FINISH BUILDING
- HIGH RESISTANCE TO HARSH WEATHER & ENVIRONMENTAL CONDITIONS
- CYCLONE & FIRE RATED AS REQUIRED



DONGA MODULE FOR TRANSPORT